



Angelina Fibers

www.PineNeedles.com

800-728-2278

There are two types of Angelina Fibers. One is heat-bondable called, “hot fix.” The second type is standard non-heat bonding, and requires iron-on fusible to attach to your applique quilt project. Note: McKenna uses the standard non-heat bonding Angelina.

Using Angelina:

1. Place a small amount of Angelina on an Applique Pressing Sheet™ (you can fold your sheet in half). Loosen and arrange the fibers into a consistent thickness. (Figure 1) An Applique Pressing Sheet will protect your iron and the Angelina fiber, enabling you to gently heat and press the fibers into a sheet. As an alternative, you can use tracing paper, parchment paper, or paper towels to keep the Angelina fibers from sticking to your iron.



Figure 1: Three colors of Angelina in their raw, unbonded state (pink, blue, and yellow).

Note: McKenna uses white Angelina for the majority of her projects.

2. With your iron on the silk setting, iron the Applique Pressing Sheet that covers the Angelina for a few seconds. Lift the top Sheet to check the status of the bonding. If the Angelina has not bonded, you will need to apply your iron longer and possibly turn the heat setting to a slightly higher temperature. Bonded Angelina becomes a non-woven sheet of fabric. (Figure 2)

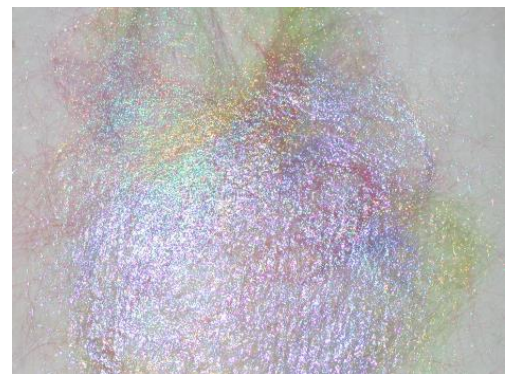


Figure 2: Bonded Angelina. Note the extra shimmer!

- Place fusible web on top of your Angelina, and with the Applique Pressing Sheet protecting your iron from both the fusible and the Angelina, and press with your iron to fuse it on. (Figure 3)



Figure 3: Fusible web ready to be pressed onto bonded Angelina fabric.

- Trace your shapes on to the fusible, cut, and you're ready to applique the Angelina to your quilt!
- To get a feathery edge, fuse only the center of the Angelina, leaving fibers loose on the edges (see Figure 2). To get a straight edge, fuse some Angelina, fold the sides over, and fuse again. (see Figure 4)



Figure 4: Angelina fabric with an edge.

Some Tips, Tricks, and Notes about Angelina to guide you as you experiment with this fun fiber:

- The longer you iron Angelina, the more the color changes and the fabric will begin to lose its shine, which is not necessarily a bad thing!
- The more Angelina you use, the stiffer the resulting fabric will be. Again, not necessarily a bad thing!



Figure 5: Angelina fabric with yarn bonded in.

Regardless of the thickness, you should be able to satin stitch and/or top stitch your Angelina applique pieces.

- You can mix two or more colors together to create your own unique effects. (see Figures 1 and 4)
- You can fuse all kinds of things into your Angelina, including yarn, fabric scraps, beads, wire, and even shells! Fuse a thin layer of Angelina, add in your extras, then fuse more Angelina on top! (see Figure 5)