

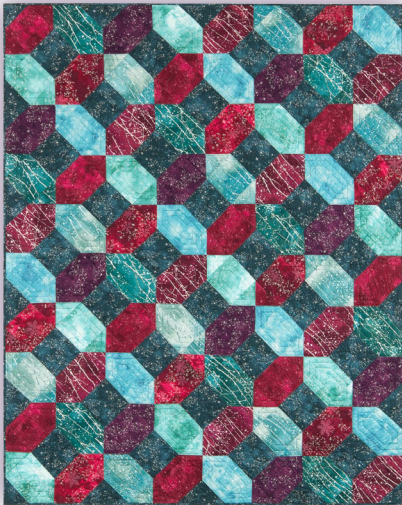


McKenna Ryan

*Simply Beautiful... Beautifully Simple.*

# Sugar Plum

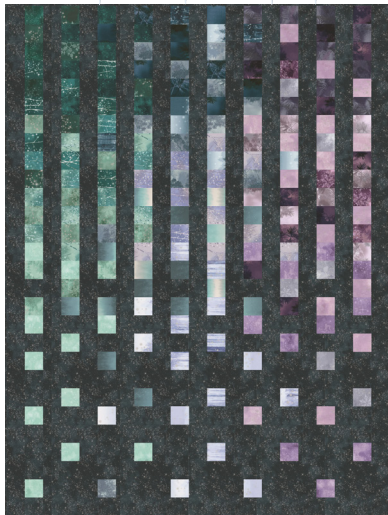
*Twilight Crossing*



 **Kringle's Kaleidoscope**



*ICEICLES*



**ALL THAT** *Glitters*



# Twilight Crossing

PIECED QUILT • 56½" x 71½"

## MATERIALS NEEDED

*Fabrics shown are from McKenna Ryan's SugarPlum™ collection for Robert Kaufman Fabrics.*

Fabric A *AYC 15900-4* Blue ⅝ yard

Fabric B *AYCM 15904-245* Mist ⅝ yard

Fabric C *AYC 15901-213* Teal ⅝ yard

Fabric D *AYC 15901-245* Mist ⅝ yard

Fabric E *AYC 15900-97* Rose ⅝ yard

Fabric F *AYC 15901-97* Rose ⅝ yard

Fabric G *AYCM 15904-97* Rose ⅝ yard

Fabric H *AYCM 15900-24* Plum ⅝ yard

Fabric I *AYCM 15900-69* Midnight 1⅛ yard  
for Background

Binding *AYCM 15900-69* Midnight ⅝ yard

Backing *AYC 15901-213* Teal ¾ yards

Batting 61" x 76"

Thread *Monofilament or cotton thread to blend with fabrics, such as McKenna Ryan's Auriful Thread Collection*



# Kringle's Kaleidoscope

TREE SKIRT · 48" x 48"

## MATERIALS NEEDED

*Fabrics shown are from McKenna Ryan's SugarPlum™ collection for Robert Kaufman Fabrics.*

Fabric 1 *AYC 15900-97* Rose  $\frac{3}{8}$  yard

Fabric 2 *AYC 15900-213* Teal  $\frac{1}{8}$  yard

Fabric 3 *AYCM 15900-24* Plum  $\frac{1}{8}$  yard

Fabric 4 *AYCM 15900-69* Midnight  $\frac{1}{8}$  yard

Fabric 5 *AYCM 15904-213* Teal  $\frac{1}{4}$  yard

Fabric 6 *AYCM 15904-24* Plum  $\frac{1}{3}$  yard

Fabric 7 *AYCM 15904-69* Midnight  $\frac{1}{3}$  yard

Fabric 8 *AYCM 15904-97* Rose  $\frac{3}{8}$  yard

Binding *AYCM 15904-97* Rose  $\frac{7}{8}$  yard

Backing *AYC 15900-224* Evergreen  $2\frac{1}{4}$  yards  
*or a 54" x 54" piece*

Batting 54" x 54"

Thread *Monofilament or cotton thread to blend with fabrics, such as McKenna Ryan's Auriful Thread Collection*

# ICICLES

PIECED QUILT • 42½" x 56½"

## MATERIALS NEEDED

*Fabrics shown are from McKenna Ryan's SugarPlum™ collection for Robert Kaufman Fabrics.*

Fabric 1 *AYCM 15900-69* Midnight 1½ yards for Background

Fabric 2 *AYC 15900-213* Teal ⅛ yard

Fabric 3 *AYCM 15904-213* Teal ⅛ yard

Fabric 4 *AYC 15901-213* Teal ⅛ yard

Fabric 5 *AYC 15901-245* Mist ⅛ yard

Fabric 6 *AYCM 15904-245* Mist ⅛ yard

Fabric 7 *AYC 15900-245* Mist ⅛ yard

Fabric 8 *AYC 15474-69* Midnight ⅛ yard

Fabric 9 *AYC 15902-69* Midnight ⅛ yard

Fabric 10 *AYC 15474-336* Fog ⅛ yard

Fabric 11 *AYC 15901-61* Periwinkle ⅛ yard

Fabric 12 *AYC 15465-73* Lake ¼ yard

Fabric 13 *AYCM 15902-61* Periwinkle ⅛ yard

Fabric 14 *AYC 15469-253* Boysenberry ⅛ yard

Fabric 15 *AYCM 15904-61* Periwinkle ⅛ yard

Fabric 16 *AYC 15474-20* Amethyst ⅛ yard

Fabric 17 *AYCM 15900-23* Lavender ¼ yard

Fabric 18 *AYC 15900-235* Hyacinth ⅛ yard

Fabric 19 *AYCM 15904-24* Plum ⅛ yard

Fabric 20 *AYC 15474-253* Boysenberry ⅛ yard

Fabric 21 *AYC 15470-208* Dawn ¾ yard for backing

Binding *AYCM 15900-69* Midnight ½ yard

Batting 48½" x 60½"

Thread *Monofilament or cotton thread to blend with fabrics, such as McKenna Ryan's Auriful Thread Collection*

ALL THAT *Glitters*  
PIECED QUILT  
63½" x 81"

**MATERIALS NEEDED**

*Fabrics shown are from McKenna Ryan's SugarPlum™ collection for Robert Kaufman Fabrics.*

Fabric 1 *AYCM 15901-208 Dawn* 3¾ yards  
for Background

Fabric 2 *AYCM 15900-69 Midnight* ¼ yard

Fabric 3 *AYCM 15904-69 Midnight* ¼ yard

Fabric 4 *AYCM 15900-24 Plum* ¼ yard

Fabric 5 *AYCM 15904-24 Plum* ¼ yard

Fabric 6 *AYC 15900-97 Rose* ¼ yard

Fabric 7 *AYCM 15904-97 Rose* ¼ yard

Fabric 8 *AYC 15900-213 Teal* ¼ yard

Fabric 9 *AYCM 15904-213 Teal* ¼ yard

Fabric 10 *AYC 15900-245 Mist* ¼ yard

Fabric 11 *AYCM 15904-245 Mist* ¼ yard

Fabric 12 *AYC 15469-253 Boysenberry* ¼ yard

Fabric 13 *AYC 15474-253 Boysenberry* ¼ yard

Binding *AYC 15474-253 Boysenberry* ⅝ yard

Backing *AYC 15474-253 Boysenberry* 5 yards

Batting 71" x 88"

Thread *Monofilament or cotton thread to blend with fabrics, such as McKenna Ryan's Auriful Thread Collection*