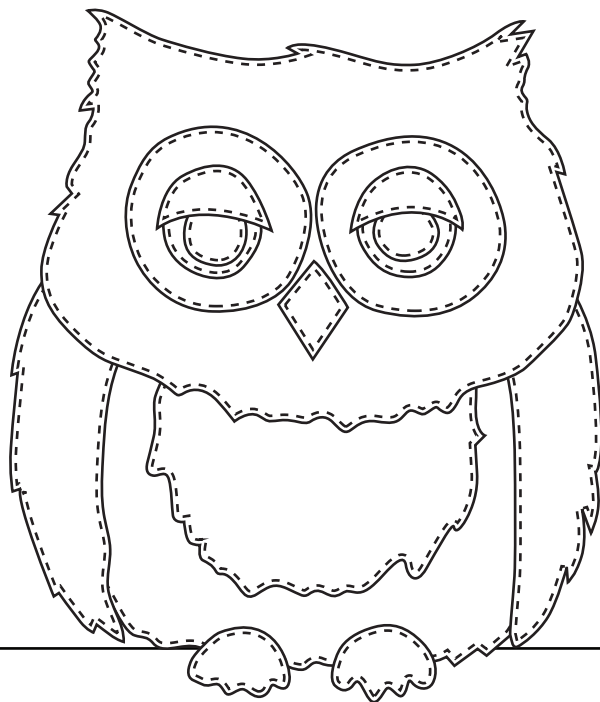


LAYERING AND QUILTING

If further quilting explanation is needed, see Tips from McKenna's Design Studio.

1. Cut backing and a piece of batting so that they each extend two to three inches beyond all sides of finished quilt top.
2. Place backing with right side of fabric down. Center batting over backing. Place quilt top, right side up, on top of batting; make sure all layers are lying flat.
3. Baste layers together.
4. Lower feed dogs on sewing machine.
5. Attach a darning foot to the machine.
6. Use a clear monofilament thread in the needle. In the bobbin, use cotton or poly-cotton thread to match backing color.
7. Stitch around all raw edges of each appliqué by moving the basted quilt under the needle in a smooth even free motion.
8. Once quilting is complete, trim outer edges of all three layers evenly, squaring quilt to 30 1/2" x 17 1/4".



Completing Quilt Instructions for Blocks 1, 2, and 3



McKenna Ryan

Simply Beautiful... Beautifully Simple.

McKenna Ryan, LLC.
McKenna Ryan Designs
1915 SE Jefferson Street
Portland, OR 97222-7604

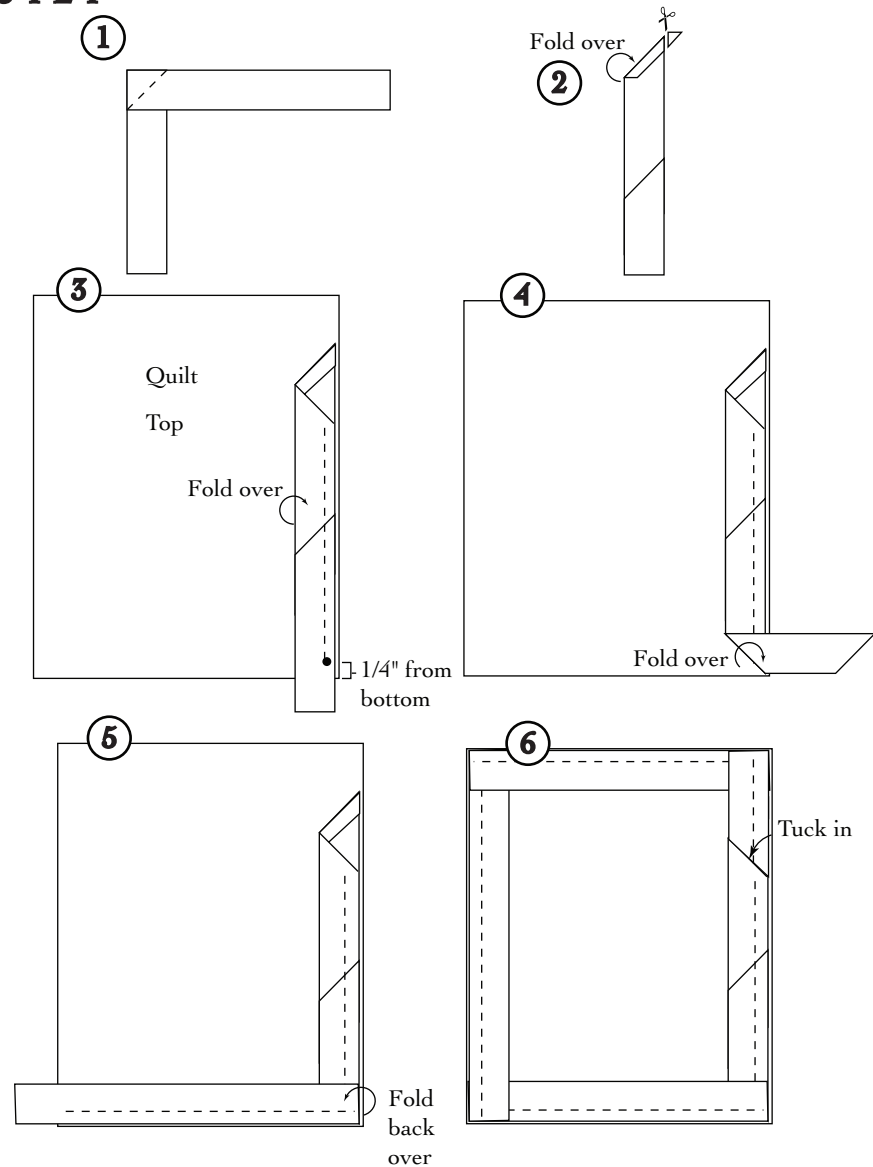
1-800-728-2278
Fax: 503-573-8311
info@pineneedles.com

<http://www.pineneedles.com>

©2014, 2017... etc. McKenna Ryan. All rights reserved. Printed in U.S.A. Distributed exclusively by McKenna Ryan, LLC. The design for this McKenna Ryan quilt pattern is protected by U.S. copyright law. It cannot be reproduced, copied, scanned or recreated using any current or future technology without explicit written consent from the pattern designer. Purchase of the pattern entitles the buyer to make one or more quilts for non-commercial consumer use. If you wish to reproduce this design in any medium for sale, a written permission is required from McKenna Ryan, LLC.

BINDING YOUR QUILT

1. Measure perimeter (all outer edges) of finished quilt.
2. Cut necessary number of $2\frac{1}{2}$ " x wof binding strips to equal a measurement 5" – 6" longer than outer edge measurement.
3. To connect more than one strip, stitch ends, right sides and raw edges together, at a 45 degree angle; stitch from corner to corner (see illustration 1).
4. Trim $\frac{1}{4}$ " from stitches and press seam allowances open.
5. Cut one end at a 45 degree angle. Fold angled end $\frac{1}{4}$ " to wrong side and press, and trim extending seam allowances (see illustration 2).
6. Fold binding strip lengthwise, wrong sides and raw edges together, and press.
7. Place binding (beginning with folded edge) to right side of quilt, at outer edge, with raw edges even.
8. Stitch, using $\frac{1}{4}$ " seam allowance; stop stitching $\frac{1}{4}$ " from corner (see illustration 3).
9. Remove quilt from sewing machine.
10. Miter binding at corners; fold binding so that it forms a 45 degree angle at corner (see illustration 4); keep this angle in place, fold binding even with adjacent edge, and continue stitching (see illustration 5).
11. To end binding, tuck free end into folded end, bring folded edge of binding to back of quilt so that $\frac{1}{2}$ " of binding shows on the front of quilt for framing effect. Hand stitch binding in place (see illustration 6).



FULL MOON SHADOW QUILT INSTRUCTIONS

Cutting Instructions:

From BPN026 Petal 140 – cut 1 – 1" x 30 ½" piece for background B

From BPN028 River Rock 611 – cut 1 – 1" x 30 ½" for background H

Refer to Diagram Two and photo on back cover for full pieced quilt assembly using blocks 1, 2 and 3 Moon Shadow blocks.

1. To the top of block 1, sew the 1" x 30 ½" background B strip. Press seam open.
2. To the bottom of block 1, sew the 1" x 30 ½" background H strip. Press seam open.
3. Sew block 3 to the top of block 1. Press seam open.
4. Sew block 2 to the bottom of block 1. Press seam open. Sewn quilt top should measure 30 ½" x 57 ¼".
5. Refer to Step 4, Layering and Quilting and quilt as desired.
6. Refer to Step 5, Binding Your Quilt for binding directions.

FULL MOON SHADOW QUILT MATERIALS NEEDED

*additional fabrics for background rows B and H are not needed, this fabric is included in the fabric lists for the individual materials list for Blocks 2 and 3

BPN023 WISTERIA 229 – 1 7/8 yard for backing

BPN027 BAYOU 577 – ½ yard for binding

37" x 64" piece of batting

Monofilament and/or cotton thread to match

Diagram Two
30 1/2" x 57 1/4"

41	4 1/2" x 12 1/4"	42	9" x 12 1/4"	43	3 1/2" x 12 1/4"	44	7" x 12 1/4"	45	5 1/2" x 12 1/4"	46	3 1/2" x 12 1/4"
----	------------------	----	--------------	----	------------------	----	--------------	----	------------------	----	------------------

47	30 1/2" x 1"									
----	--------------	--	--	--	--	--	--	--	--	--

2 1/2"

48	49	50	51	52	53	54	55	56	57	58	59	60	61
----	----	----	----	----	----	----	----	----	----	----	----	----	----

2 1/2"

62	30 1/2" x 1"									
----	--------------	--	--	--	--	--	--	--	--	--

63	64	65	66	67	68
4 3/4" x 28 3/4"	7" x 28 3/4"	2" x 28 3/4"	3 1/2" x 28 3/4"	6 1/4" x 28 3/4"	2 1/2" x 28 3/4"
4 1/2" x 28 3/4"	7" x 28 3/4"	2" x 28 3/4"	3 1/2" x 28 3/4"	6 1/4" x 28 3/4"	2 1/2" x 28 3/4"
4 3/4" x 28 3/4"	7" x 28 3/4"	2" x 28 3/4"	3 1/2" x 28 3/4"	6 1/4" x 28 3/4"	2 1/2" x 28 3/4"
4 1/2" x 28 3/4"	7" x 28 3/4"	2" x 28 3/4"	3 1/2" x 28 3/4"	6 1/4" x 28 3/4"	2 1/2" x 28 3/4"
4 3/4" x 28 3/4"	7" x 28 3/4"	2" x 28 3/4"	3 1/2" x 28 3/4"	6 1/4" x 28 3/4"	2 1/2" x 28 3/4"

69	30 1/2" x 1"									
----	--------------	--	--	--	--	--	--	--	--	--

2 1/2"

70	71	72	73	74	75	76	77	78	79	80	81	82
----	----	----	----	----	----	----	----	----	----	----	----	----

2 1/2"

83	30 1/2" x 1"									
----	--------------	--	--	--	--	--	--	--	--	--

84	85	86	87	88
4 1/2" x 12 1/4"	9" x 12 1/4"	3 1/2" x 12 1/4"	7" x 12 1/4"	5 1/2" x 12 1/4"
4 3/4" x 12 1/4"	9" x 12 1/4"	3 1/2" x 12 1/4"	7" x 12 1/4"	5 1/2" x 12 1/4"
4 1/2" x 12 1/4"	9" x 12 1/4"	3 1/2" x 12 1/4"	7" x 12 1/4"	5 1/2" x 12 1/4"
4 3/4" x 12 1/4"	9" x 12 1/4"	3 1/2" x 12 1/4"	7" x 12 1/4"	5 1/2" x 12 1/4"
4 1/2" x 12 1/4"	9" x 12 1/4"	3 1/2" x 12 1/4"	7" x 12 1/4"	5 1/2" x 12 1/4"